



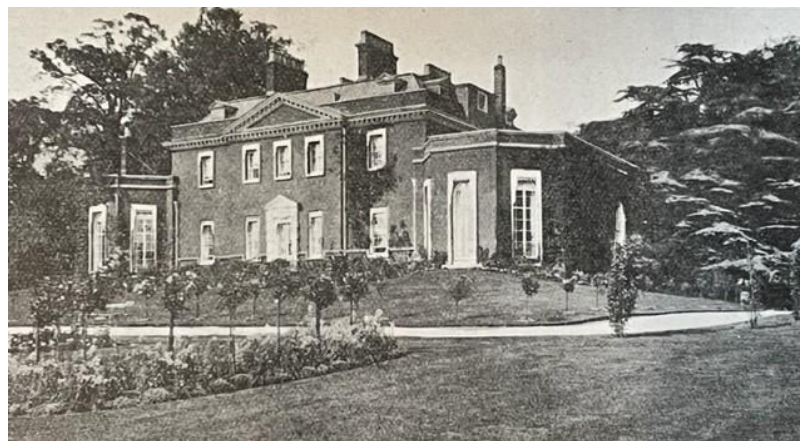
VILLAGE WALK 4

Blue Boar Hall, The Bower House and a walk through Havering Country Park The Green down Orange Tree Hill and into Havering Country Park via Pinewood Avenue

On the edge of the village green, on the left as you face the church, is the oldest remaining building in the village, Blue Boar Hall. Documented in 1710, with parts dating from the 16th and 17th centuries, it was refronted in the 19th century. It is a timber framed house with a brick front, three windows wide, 2 storeys high. It has a large, stepped end stack on the west gable, a smaller brick stack on the front roof slope and sash windows to the front with cambered heads. Two small rear wings are also timbered framed. The Blue Boar was a public house for part of the 19th century

Walking past Elmer Avenue, down Orange Tree Hill, you will notice the old cast iron lamp posts. At the entrance to Elmer Avenue there was an entrance pillar surviving from the Havering Park Estate. It was restored fairly recently before being flattened by a hit and run driver! It is too expensive to restore again.

Continuing down you come to the originally called and then later The was built for John barrister, in the 1729 by Henry his first commission, by Bridgeman. The the left of the main



Orange Tree Hill Bower House, Monthavering Manor House. It Baynes, a Palladian style in Flitcroft. It was with landscaping stable block to building, may

have been designed by Flitcroft or Bridgeman. Inside there is a staircase which has echoes of Inigo Jones. The house, although small, shows us what a gentlemen's home in the Georgian period looked like. John Baynes died in 1737. His monument in the church is the oldest there. The house is open to visitors during the London Open House Weekend.

Return to the Green via Pinewood Road, opposite the Orange Tree Pub, and through the country park via 5 ways, signposted. (Probably just under a mile).